

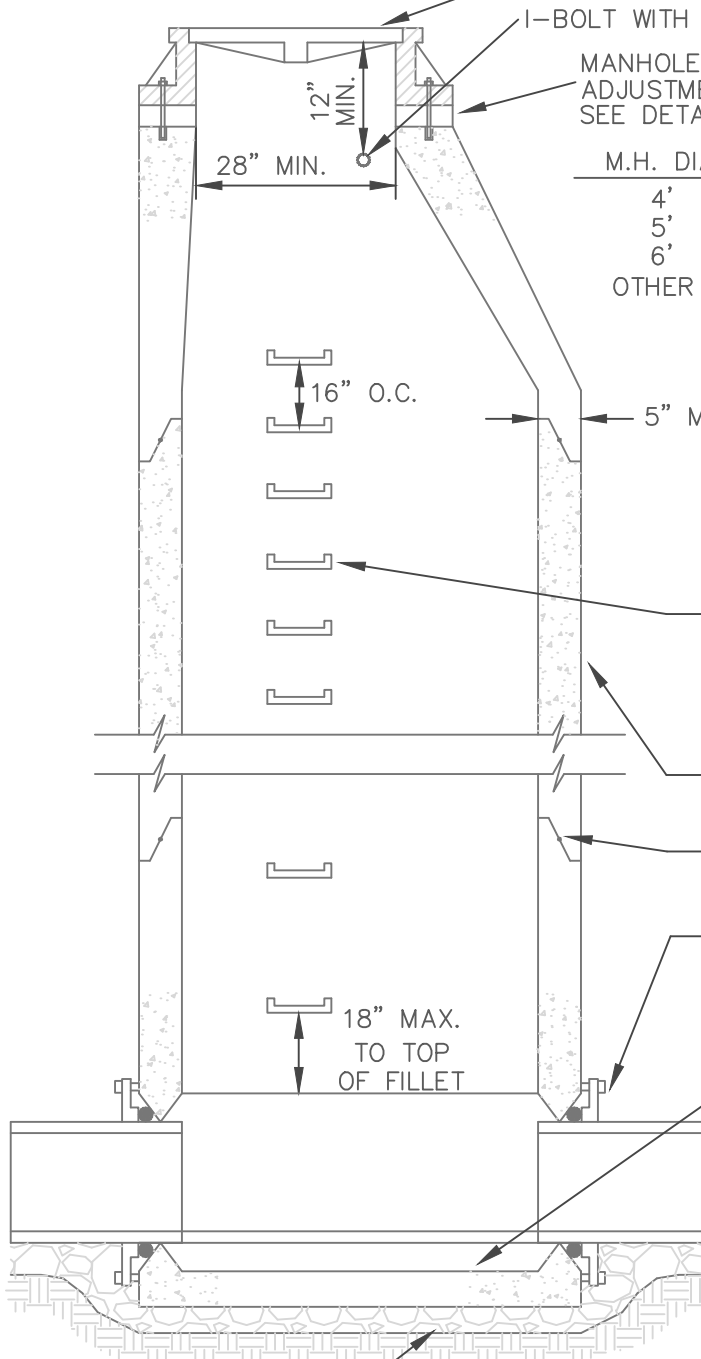
WHERE APPLICABLE,
TAPER FILLET & PROVIDE
SMOOTH TRANSITION OF
OPPOSING FLOWS.

BOLTED WATERTIGHT
FRAME & COVER
SEE DETAIL SD-4

I-BOLT WITH 8" SHANK
MANHOLE FRAME & COVER
ADJUSTMENT DETAILS
SEE DETAIL SD-5.

MANHOLE CONE SECTION
MIN 2'-8" TO 5'-0".

M.H. DIA.	SEWER
4'	8" - 18"
5'	21" - 30"
6'	36" - 42"
OTHER	WILL REQUIRE SUBMITTAL FOR APPROVAL BY GCDC-WWS.



MANHOLE LIFTING HOLES SHALL BE
PLUGGED WITH CONCRETE PLUG.
EPOXY IN PLACE.

MANHOLE STEPS SHALL BE INSTALLED AT
THE MANUFACTURING FACILITY. THE STEPS
SHALL BE 90° TO THE MAIN LINE SEWER AT
16" O.C.. DO NOT PLACE STEPS IN THE
ANGLED PORTION OF THE CONE, OR OVER
THE PIPE AND FLOW CHANNEL.

PRECAST CONCRETE MANHOLE SECTION
ASTM C-478

"O"-RING JOINTS ASTM C-443

FLEXIBLE JOINT SHALL BE KOR-N-SEAL
RES-SEAL OR APPROVED GCDC-WWS
ALTERNATE. USE A-LOCK, PRESS WEDGE, OR
AN APPROVED FLEXIBLE JOINT FOR SEWERS
18" AND LARGER.

STANDARD MANHOLE BASE. MINIMUM
BASE THICKNESS 8" UP TO 25' DEEP, 12"
OVER 25' DEEP.

CRUSHED 6A LIMESTONE BACKFILL TO
UNDISTURBED EARTH.

(MIN.) 4" CRUSHED 6A LIMESTONE UNDER
PRECAST INTEGRAL BASE REINFORCED
MANHOLE BOTTOM

IPP SAMPLING MANHOLE